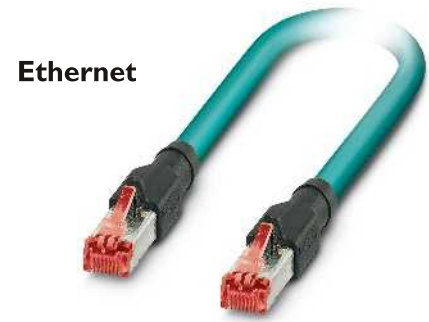


RJ45 Ethernet cables

Notes:

For accessories, see page: 388



Ethernet

**RJ45 Ethernet cable
for IP20 applications**

		Technical data		
Cable, properties				
Transmission characteristics (category)		CAT5		
Conductor structure		7x 0.16 mm		
Conductor cross section		4x 2x 0.14 mm ²		
Conductor structure for signal		7x 0.16 mm		
AWG signal line		26		
Cable diameter		6.2 mm		
Conductor resistance		≤ 290 Ω/km (at 20°C)		
Type of shield		Tinned copper braided shield		
Conductor material		Bare Cu litz wires		
Outer sheath material		PUR		
Color of outer sheath		water blue RAL 5021		
Color, single wire		white/blue-blue, white/orange-orange, white/green-green, white/brown-brown		
General data				
Ambient temperature (operation)		-20°C ... 70°C (RJ45 connector)		
		Ordering data		
Description	Length of cable	Type	Order No.	Pcs./Pkt.
Ethernet cable, CAT5, pre-assembled				
	0.3 m	NBC-R4AC/0,3-94Z/R4AC	1423032	1
	0.5 m	NBC-R4AC/0,5-94Z/R4AC	1403926	1
	1 m	NBC-R4AC/1,0-94Z/R4AC	1403927	1
	1.75 m	NBC-R4AC/1,75-94Z/R4AC	1423433	1
	2 m	NBC-R4AC/2,0-94Z/R4AC	1403929	1
	3 m	NBC-R4AC/3,0-94Z/R4AC	1403930	1
	5 m	NBC-R4AC/5,0-94Z/R4AC	1403933	1
	10 m	NBC-R4AC/10,0-94Z/R4AC	1403934	1
	15 m	NBC-R4AC/15,0-94Z/R4AC	1410797	1
	20 m	NBC-R4AC/20,0-94Z/R4AC	1423033	1